

Product Catalog

2024

Antenna and Cable analyzers

Antennas and amplifiers

Power supplies

Data logging and analysis

Transceiver Interfaces

Ham Radio Software

The innovation Power Supply Shackmaster Power 500

3-IN-1 solution for amateur radio, laboratories,
telecommunications and DIY projects.



- **Safety:** the Intelligent Protection System protects your devices from damage
- **Quiet Operation:** The low EMI and acoustic noise minimize distractions
- **Flexibility:** The flexible orientation and multiple connectivity options make it easy to use
- **Convenience:** The touchscreen display and USB interface make it easy to control and monitor the power supply
- **Power:** The 500 watts continuous power output is enough for demanding tasks
- **Durability:** The sleek design and sturdy construction make it a reliable investment
- **Warranty:** Register in Shackmaster Club and add another year to your RigExpertCare warranty program! Replace the device with a new one within three years!

OSL Calibration Kit

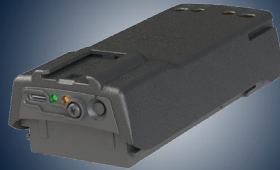


- 3-in-1: Open, Short, Load for DC up to 2.5 GHz
- Ideal for radio amateurs, labs and DIY projects
- Durable safeguarding of connectors against mechanical impacts
- Swivel connectors for ease of use.

New devices by **RigExpert**



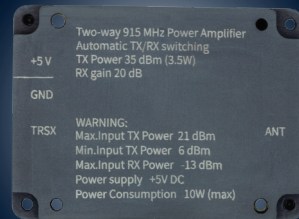
MRB-M4
Li-ion battery
for Motorola DPxx



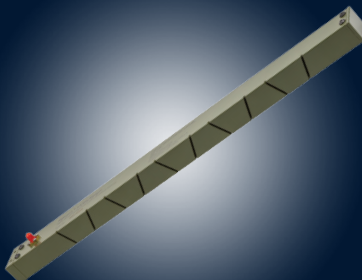
MRB-MR7
Li-ion battery
for Motorola R7



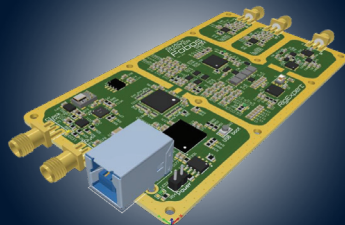
2.4GPA
Bidirectional
amplifier



915MPA
Bidirectional
amplifier

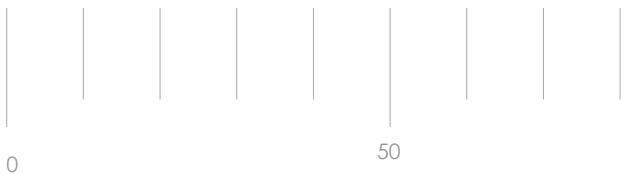


5.8G Minigun
Antenna (for drone control)



Fobos SDR
Broadband SDR receiver

RigExpert MRB-M4



RigExpert MRB-M4

The Li-Ion battery for Motorola DPxx mobile radio with fast charging QC2.0 USB Type-C is designed for extreme environment usage.

- Stay connected: up to 38 hours on one charge
- Charge fast: 90% capacity in 90 minutes
- Don't lose control: charge the radio without turning it off
- Be autonomous: charge even from a powerbank on the go

Rated capacity	4950mAh, 36.6BWh
Nominal output voltage	7.4V
Battery type	Li-ion LG INR21700M50LT
Charging protocol	BCP1.2, QC2.0
Charging port	USB Type-C
Nominal charging current	2A
Maximum charging current	3.0A
Nominal discharging current	1.5A
Discharge current protection	9.25A
Operation temperature	-20°C to +60°C
Charge temperature range	0°C to +45°C
Expected Life Cycle	500 cycles ≥ 80% (@+25°C and nominal charge/discharge conditions)
Compatibility	Motorola DP4400, DP4600, DP4800, DP4401, DP4601, DP4801, DP4000e Series, DP2000e Series
Dimensions	113,6 x 55,2 x 33,9 mm
Weight	206g

NOTE:

All specifications could be changed without notice.

RigExpert MRB-MR7



RigExpert MRB-MR7

The Li-Ion battery for Motorola R7 handy-talkie with fast charging QC2.0 USB Type-C is designed for reliable communication in extreme environment.

- Stay connected: the radio is on during the charge
- Type-C connector on the top panel allows you to charge the battery when the radio is on
- Internal status and charge RGB LED indicators are switched on by pressing the Status Check Button
- Quick Charge: 90% capacity in 90 minutes

Rated capacity	4950mAh, 36.6Wh
Nominal output voltage	7.4V
Battery type	Li-ion
Charging protocol	BCP1.2, QC2.0
Charging port	USB Type-C
Nominal charging current	2A
Maximum charging current	3.0A
Nominal discharging current	1.5A
Discharge current protection	9.25A
Operation temperature	-20°C to +60°C
Charge temperature range	0°C to +45°C
Expected Life Cycle	500 cycles ≥ 80% (@+25°C and nominal charge/discharge conditions)
Compatibility	Motorola R7, R7a
Dimensions	118,5 x 54,7 x 34 mm
Weight	204g

NOTE:

All specifications could be changed without notice.

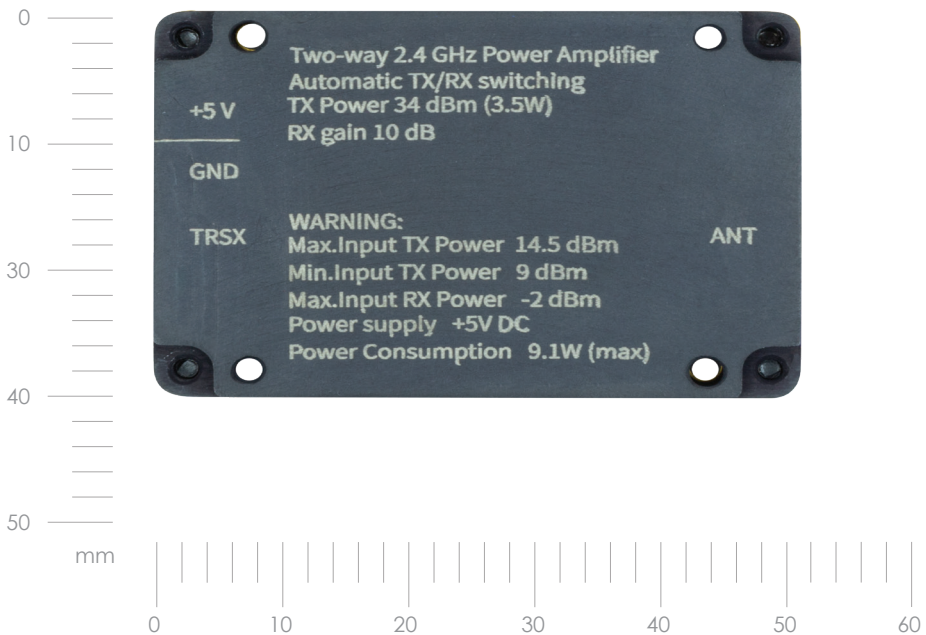
RigExpert 2.4GPA

2.4GHz Bidirectional amplifier

Small but powerful

Intended for signal amplification when used for UAVs, ham radio, IoT, and measurements.

Guaranteed conformance to stated specs.



Dimensions and weight

Dimensions, mm	40x56x15
Weight, g	46

Important note:
Maximum TX input power can be changed by replacing the input attenuator.

RigExpert 2.4GPA

Absolute Maximum Ratings

Parameter	Rating
Min RF Input TX Power	9 dBm
Max RF Input TX Power	14.5 dBm
Max RF Input RX Power	-2 dBm
Device Voltage	5.5 V

Recommended Operating Conditions

Parameter	Min.	Typical	Max.	Units
RF Input TX Power	9	13	14.5	dBm
Device Voltage	+4.75	+5	+5.25	V

Electrical Specifications

Parameter	Conditions	Min.	Typical	Max.	Units
Frequency Range		2000		2600	MHz
TX Gain			22		dB
RX Gain			10		dB
Output Power CW	Input RF Power 13dBm @ 2.4 GHz	33.5	34.5	35	dBm
Output Power Pulse	Input RF Power 13dBm @ 2.4 GHz	34	35	36	dBm
2nd Harmonic CW	Output Power 34.4dBm @ 2.4 GHz		0		dBm
2nd Harmonic Pulse	Output Power 35dBm @ 2.4 GHz		2		dBm
Power Consumption in CW	Input RF Power 13dBm @ 2.4 GHz		9.1		W
Power Consumption in RX			0.3		W

NOTE:

All specifications could be changed without notice.

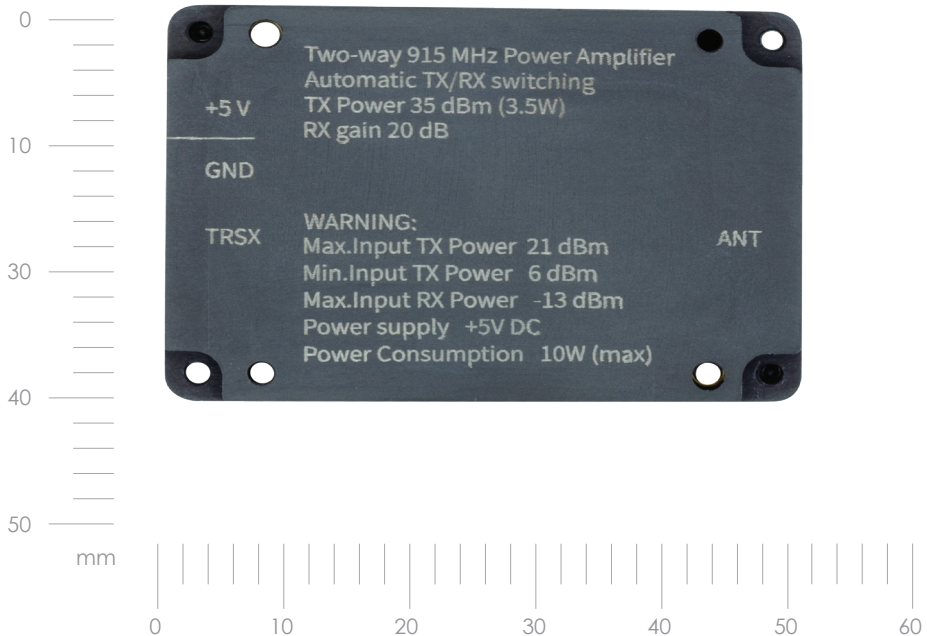
RigExpert 915MPA

915MHz Bidirectional amplifier.

Guaranteed conformance to stated specs

Intended for signal amplification when used for UAVs, ham radio, IoT, and measurements.

RX gain 20 dB . TX gain 15 dB.



Dimensions and weight

Dimensions, mm	40x56x15
Weight, g	46

Important note:
Maximum TX input power can be changed by replacing the input attenuator.

RigExpert 915MPA

Absolute Maximum Ratings

Parameter	Rating
Min RF Input TX Power	6 dBm
Max RF Input TX Power	21 dBm
Max RF Input RX Power	-13 dBm
Device Voltage	5.5 V

Recommended Operating Conditions

Parameter	Min.	Typical	Max.	Units
RF Input TX Power	6	20	21	dBm
Device Voltage	+4.75	+5	+5.25	V

Electrical Specifications

Parameter	Conditions	Min.	Typical	Max.	Units
Frequency Range		902		928	MHz
TX gain			15		dB
RX gain			20	22	dB
Output Power CW	Input RF Power 20dBm @ 916 MHz	34	35	36	dBm
Output Power Pulse	Input RF Power 20dBm @ 916 MHz	35	35.5	36	dBm
2nd Harmonic CW	Output Power 35.1dBm @ 915 MHz		1.3		dBm
2nd Harmonic Pulse	Output Power 36.6dBm @ 915 MHz		1.9		dBm
Power Consumption in RX	Output RF Power 35dBm @ 916 MHz		9.8		W

NOTE:

All specifications could be changed without notice.

RigExpert 5.8G Minigun

5.8G Minigun Antena

Level up your drone control

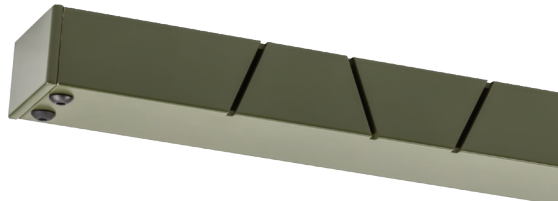
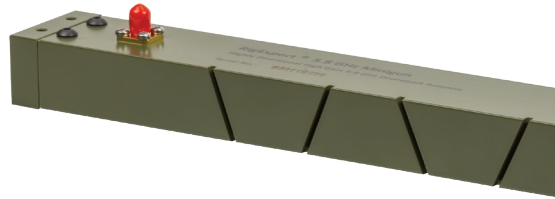
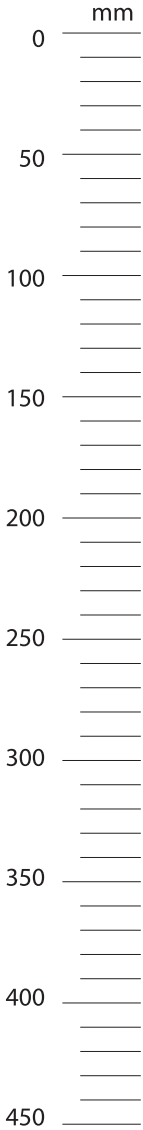
Provides stable connection over longer distances due to directional characteristics and additional signal amplification.

Antenna type	Slot Antenna Array
Frequency range	5725 MHz до 5875 MHz
Connector type	SMA (female)
Impedance	50 Ohm
Maximum power	250 W
Gain	15 dBi
SWR	< 1.5
Polarization	Linear (Vertical)
Radiation pattern	H-Plane 90°, V-Plane 8°
Mounting	1/4" screw
Dimensions	40 mm x 25 mm x 450 mm
Weight	400g (14 Oz)

NOTE:

All specifications could be changed without notice.

RigExpert 5.8G Minigun



Fobos SDR

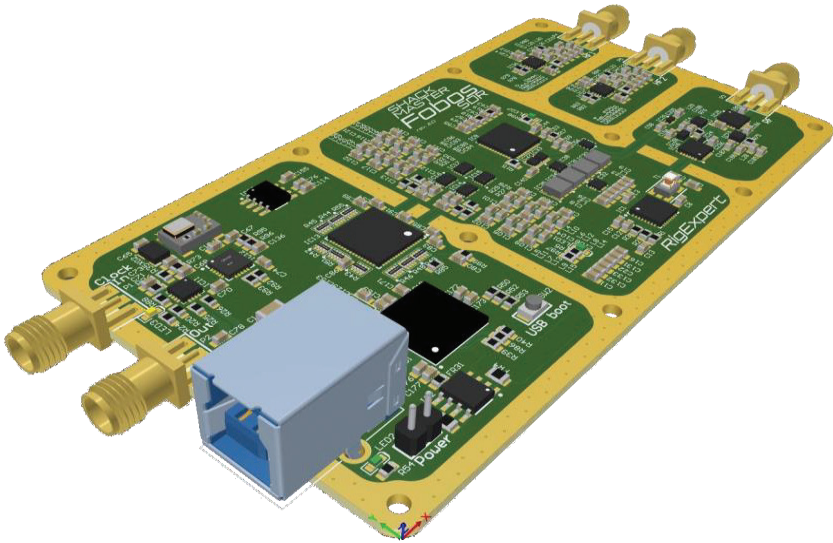
Broadband SDR receiver

Open the boundless horizons of Radio

This SDR receiver is designed to receive, process, and analyze radio signals in the range from 0.1 to 6000 MHz using software.

Extend your operating range to your liking, choose your own transmit and receive modes, change power and modulation in real time.

Create your own programs and algorithms for working with radio signals and achieve greater productivity by updating software without purchasing additional hardware.

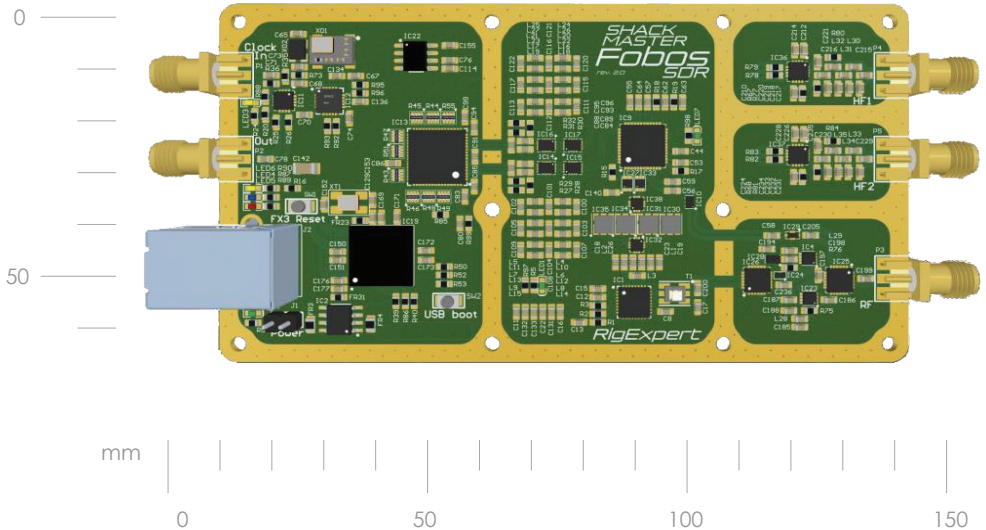


Fobos SDR

Frequency range	100 kHz – 30 MHz (direct sampling) 30 MHz – 6 GHz (double heterodyne)
IQ sample rate (bandwidth)	Up to 50 MHz
ADC resolution	14 bit
Frequency stability	±0,5 ppm
PCB dimensions	110 x 60 mm
Outline dimensions	130 x 60 x 16 mm

NOTE:

All specifications could be changed without notice.



Buy a RigExpert Analyzer for Quality and Value

- Splash and Dust-proof case
- User friendly multilingual interface
- Consistency and accuracy without prior recalibration
- 2-year device replacement warranty



AA-650 ZOOM
0.1 - 650 MHz AS



AA-1500 ZOOM
0.1 - 1500 MHz AS



AA-2000 ZOOM
0.1 - 2000 MHz AS



AA-3000 ZOOM
0.1 - 3000 MHz AS



Stick 230
0.1 - 230 MHz AS



Stick 500
0.1 - 500 MHz AS



Stick Pro
0.1 - 600 MHz AS



Stick XPro
0.1 - 1000 MHz AS



AA-35 ZOOM
0.06 - 35 MHz



AA-55 ZOOM
0.06 - 55 MHz



AA-230 ZOOM
0.1 - 230 MHz AS

ALL you want in ONE

RigExpert Cable and Antenna analyzers are renowned for their comprehensive functionality.

Measuring of SWR, Return Loss, R, X, Z, L, C, Magnitude and Phase Angle, tuning stubs and single or multiband antennas, checking cables, locating transmission lines faults - here is not a complete list of the capabilities of each device.

In addition to the extensive functionality, users of our devices note a number of very important advantages. All our devices are:

- Factory calibrated. No calibration is required prior to using the RigExpert analyzer. The user just needs to turn the device on and it is ready to go.
- Intuitive and easy to use. Menus, self-explanatory keypad markings and the built-in context sensitive helper allow the user to refer to the User's Manual rarely.
- Durable and handy. The devices enclosed in a sturdy case are renowned for their reliability thanks to careful engineering and four-stage quality control.
- Program called RigExpertCare. RigExpertCare™ means that the company replaces defective goods with the new models as soon as possible.



RigExpert AA-35 ZOOM

Tuning the system is easy

Portable analyzer with factory calibration is designed for checking and tuning HF systems up to 35 MHz.

Explore every graph detail on a large screen with ZOOM function.



RigExpert AA-35 ZOOM

Frequency range	0.06 to 35 MHz
Frequency entry	1 kHz
Measurement for	25, 50, 75, 100 Ohm
SWR measurement range	1 to 100 in numerical modes, 1 to 10 in chart modes
R and X range	0...10 000, -10 000...10 000 in numerical modes, 0.. 1 000, -1 000... 1 000 in chart modes
Display modes	R, X chart, 100 points SWR, return loss, R, X, Z, L, C at single frequency SWR chart, 100 points, RL chart, 100 points
RF output	Connector type: UHF (50-239) Output signal shape: square Output power: +13 dBm (at 50 Ohm load)
Power	Two 1.5V alkaline batteries, type AA or Two 1.2V Ni-MH rechargeable batteries type AA Max. 4 hours of continuous measurement, max. 2 days in stand-by mode when fully charged batteries are used When the analyzer is connected to a PC or a DC adapter with USB socket, it takes power from these sources
Interface	320x240 color TFT display 6x3 keys on the water-proof keypad Menus and help screens in English (standard), French, Ukrainian and Japanese USB connection to a personal computer
Dimensions	103 x 207 x 37 mm (4.1 x 8.1 x 1.4 inch)
Operating temperature	0...40 °C (32...104 °F)
Weight	310 g (10,9 oz) without batteries

NOTE:

All specifications could be changed without notice.

RigExpert AA-55 ZOOM

Measure flawlessly

Portable analyzer with factory calibration is designed for checking and tuning HF systems up to 55 MHz.

Explore every graph detail on a large screen with ZOOM function.

Feature: SWR2Air and multiSWR modes



RigExpert AA-55 ZOOM

Frequency range	0.06 to 55 MHz
0.06 to 55 MHz	1 kHz
Frequency entry	25, 50, 75, 100 Ohm
SWR measurement range	1 to 100 in numerical modes, 1 to 10 in chart modes
R and X range	0...10 000, -10 000...10 000 in numerical modes, 0.. 1 000, -1 000... 1 000 in chart modes
Display modes	R, X chart, 100 points SWR, return loss, R, X, Z, L, C at single frequency SWR chart, 100 points, RL chart, 100 points
RF output	Connector type: UHF (50-239) Output signal shape: square Output power: +13 dBm (at 50 Ohm load)
Power	Two 1.5V alkaline batteries, type AA or Two 1.5V Ni-MH rechargeable batteries type AA Max. 4 hours of continuous measurement, max. 2 days in standby mode when fully charged batteries are used When the analyzer is connected to a PC or a DC adapter with USB socket, it takes power from these sources
Interface	320x240 color TFT display 6x3 keys on the water-proof keypad Menus and help screens in English (standard), French, Ukrainian and Japanese USB connection to a personal computer
Dimensions	103 x 207 x 37 mm (4.1 x 8.1 x 1.4 inch)
Operating temperature	0...40 °C (32...104 °F)
Weight	310 g (10,9 oz) without batteries

NOTE:

All specifications could be changed without notice.

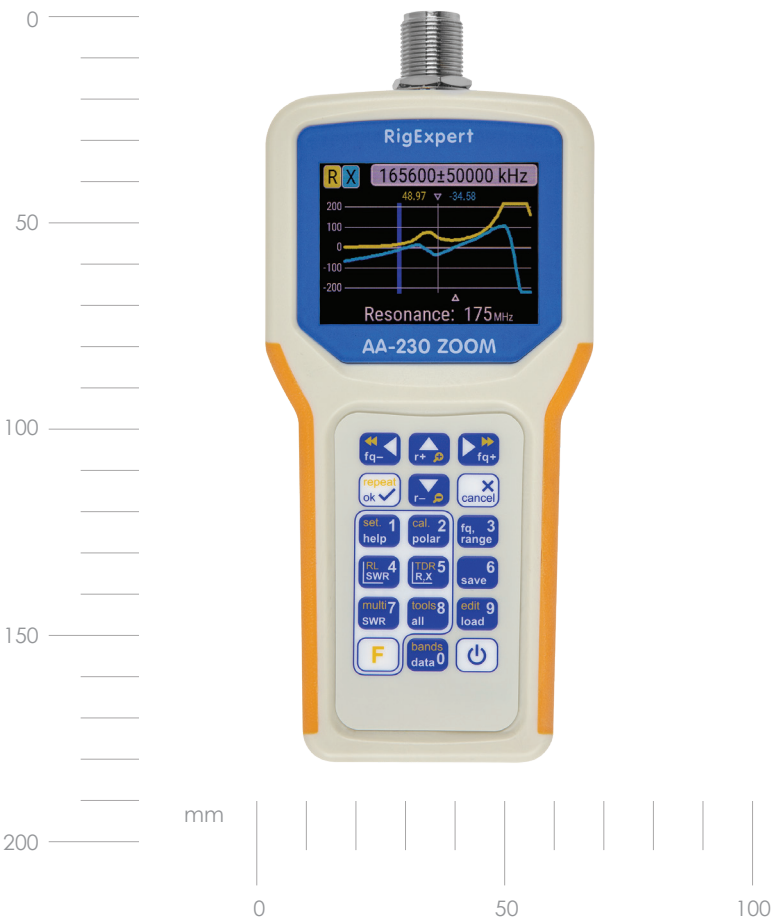
RigExpert AA-230 ZOOM

Scale up the capabilities

Portable analyzer with factory calibration is designed for checking and tuning VHF systems up to 230 MHz.

Identify power system faults with integrated reflectometer mode.

Explore every graph detail on a large screen with ZOOM function.



RigExpert AA-230 ZOOM

Frequency range	0.1 to 230 MHz
Frequency entry	1 kHz
Measurement for	25, 50, 75, 100, 150, 200, 300, 450 and 600 Ohm systems
SWR measurement range	1 to 100 in numerical modes, 1 to 10 in chart modes
R and X range	0...10 000, -10 000...10 000 in numerical modes, 0.. 1 000, -1 000... 1 000 in chart modes
Display modes	SWR at single or multiple frequencies SWR, return loss, R, X, IZI, L, Cat single frequency Smith chart, 20 to 500 points R, X chart, 20 to 500 points Smith chart, 20 to 500 points Return loss chart, 20 to 500 points TDR (Time Domain Reflectometer) chart Cable tools (loss and characteristic impedance) Optional open-short-load calibration.
RF output	Connector type: N Output signal shape: square Output power: -10 dBm (on 50 Ohm load)
Power	Four 1.5V alkaline batteries, type AAA or Four 1.2V AAA Ni-MH batteries. Max. 4 hours of continuous measurement, max. 2 days in standby mode when fully charged batteries are used When the analyzer is connected to a PC or a DC adapter with USB socket, it takes power from these sources
Interface	290x220 color TFT display 6x3 keys on the water-proof keypad Menus and help screens in English (standard), Japanese Bluetooth v.4.2, LE USB connection to a personal computer
Dimensions	82 x 182 x 32 mm (3.2 x 7.2 x 1.3 inch)
Operating temperature	-15° ... 40 °C (5 ... 104 °F)
Weight	236 g (8.329 oz) without batteries

NOTE:

All specifications could be changed without notice.

RigExpert STICK 230

Modern and compact

Factory calibrated analyzer is designed for checking and tuning VHF systems up to 230 MHz.

Carry it in your pocket or your belt, and work in the field or at height for up to 16 hours on a single charge.

Easily read data on the screen even in direct sunlight.



RigExpert STICK 230

Frequency range	0.1 to 230 MHz
Frequency entry	1 kHz
Measurement for	25, 50, 75, 100, 150, 200, 300, 450 and 600 Ohm systems
SWR measurement range	1 to 100 in numerical modes, 1 to 10 in chart modes
R and X range	0...10 000, -10 000...10 000 in numerical modes, 0.. 1 000, -1 000... 1 000 in chart modes
Display modes	Multé (a quick check of multiband antennas) SWR chart, 100 points SWR, Return loss, R, X, Z, L, C, magnitude and phase angle at one frequency
RF output	Connector type: N Output signal shape: square Output power: -10 dBm (on 50 Ohm load)
Power	One 3.7V Li-Ion battery, type 18650 When the analyzer is connected to a PC or a DC adapter with USB socket, it takes power from these sources Charging time: 3 hours using the charger
Interface	200x200 monochrome e-paper display 2x3 keys on the water-proof keypad Menus and help screens in English (standard), Japanese Bluetooth: v. 4.2 BLE Single-mode Class B USB type C connection to a personal computer
Dimensions	40 x 185 x 33 mm (1.6 x 7.3 x 1.3 inch)
Operating temperature	-15° ... 40 ° C (5 ... 104 ° F)
Weight	185 g (6.5 oz) with the battery

NOTE:

All specifications could be changed without notice.

RigExpert STICK 500

UHF in your pocket

Factory calibrated analyzer is designed for checking and tuning UHF systems up to 500 MHz.

Carry it in your pocket or your belt, and work in the field or at height for up to 16 hours on a single charge.

Easily read data on the screen even in direct sunlight.



RigExpert STICK 500

Frequency range	0.1 to 500 MHz
Frequency entry	1 kHz
Measurement for	12.5, 25, 28, 37, 50, 75, 100, 150, 200, 300, 450, 600 Ohm systems
SWR measurement range	1 to 100 in numerical modes, 1 to 10 in chart modes
R and X range	0... 10000, -10000... 10000
Display modes	HAM (a quick check of single band antenna) Multifé (a quick check of multiband antennas) OSL calibration mode SWR chart, 100 points SWR, Return loss, R, X, Z, L, C, magnitude and phase angle at one frequency
RF output	Connector type: N Output signal shape: square Output power: -10 dBm (at 50 Ohm load)
Power	One 3.7V Li-Ion battery, type 18650 When the analyzer is connected to a PC or a DC adapter with USB socket, it takes power from these sources Charge time: 3 hours when using a charger
Interface	High contrast E Ink display, 200 × 200 2x3 keys on the water-proof keypad Menus and help screens in English (standard), Japanese Bluetooth: v. 4.2 BLE Single-mode Class B USB type C connection to a personal computer
Dimensions	40 x 185 x 33 mm (1.6 x 7.3 x 1.3 inch)
Operating temperature	-15° ... 40 ° C (5 ... 104 ° F)
Weight	185 g (6.5 oz) with the battery

NOTE:

All specifications could be changed without notice.

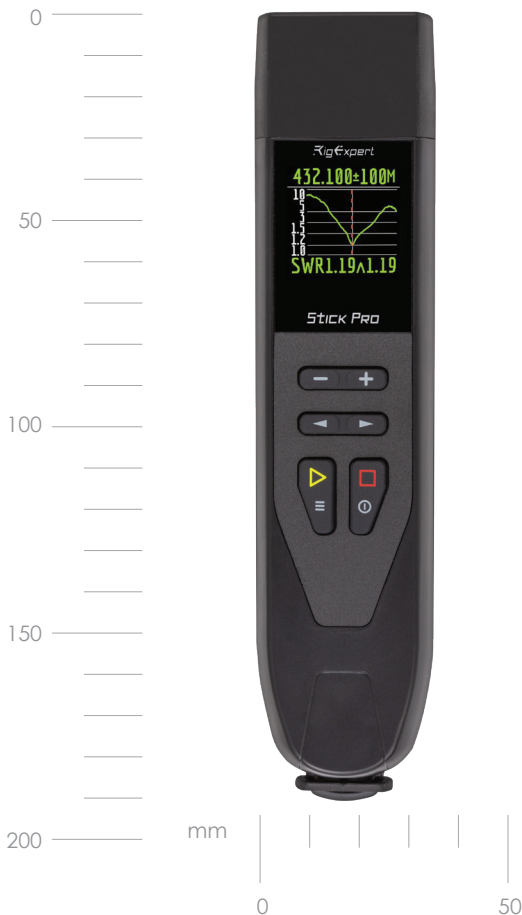
RigExpert STICK PRO

Small. Handy. Powerful. UHF.

Factory calibrated analyzer is designed for checking and tuning UHF systems up to 600 MHz.

Carry it in your pocket or your belt, and work in the field or at height for up to 16 hours on a single charge.

Easily read data on the screen even in direct sunlight.



RigExpert STICK PRO

Frequency range	0.1 to 600 MHz
Frequency entry	1 kHz
Measurement for	12.5, 25, 28, 37, 50, 75, 100, 150, 200, 300, 450, 600 Ohm systems
SWR measurement range	1 to 100 in numerical modes, 1 to 10 in chart modes
R and X range	0... 10000, -10000... 10000
Display modes	Multé (a quick check of multiband antennas) SWR chart, 100 points SWR, Return loss, R, X, Z, L, C, magnitude and phase angle at one frequency
RF output	Connector type: N Output signal shape: square Output power: -10 dBm (at 50 Ohm load)
Power	One 3.7V Li-Ion battery, type 18650 When the analyzer is connected to a PC or a DC adapter with USB socket, it takes power from these sources Charge time: 3 hours when using a charger
Interface	200x200 color TFT display 2x3 keys on the water-proof keypad Menus and help screens in English (standard), Japanese Bluetooth: v. 4.2 BLE Single-mode Class B USB type C connection to a personal computer
Dimensions	40 x 185 x 33 mm (1.6 x 7.3 x 1.3 inch)
Operating temperature	0...40 °C (32...104 °F)
Weight	185 g (6.5 oz) with the battery

NOTE:

All specifications could be changed without notice.

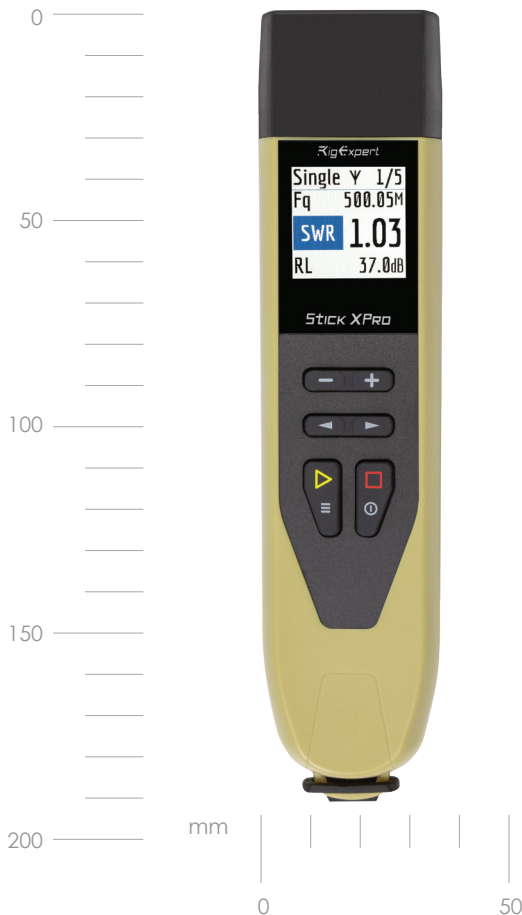
RigExpert STICK XPRO

Push your radio limits

Factory calibrated analyzer is designed for checking and tuning UHF systems up to 1000 MHz.

Carry it in your pocket or your belt, and work in the field or at height for up to 16 hours on a single charge.

Easily read data on the screen even in direct sunlight.



RigExpert STICK XPRO

Frequency range	0.1 to 1000 MHz
Frequency entry	1 kHz
Measurement for	12.5, 25, 28, 37, 50, 75, 100, 150, 200, 300, 450, 600 Ohm systems
SWR measurement range	1 to 100 in numerical modes, 1 to 10 in chart modes
R and X range	0... 10000, -10000... 10000
Display modes	SWR at single or multiple frequencies SWR, return loss, R, X, Z , L, Cat single frequency SWR chart, 20 to 500 points R, X chart, 20 to 500 points Smith chart, 20 to 500 points Return loss chart, 20 to 500 points TDR (Time Domain Reflectometer) chart Cable tools (loss and characteristic impedance) Optional open-short-load calibration. Mute mode - to check your multiband antenna promptly
RF output	Connector type: N Output signal shape: square Output power: -10 dBm (at 50 Ohm load)
Power	One 3.7V Li-Ion battery, type 18650 When the analyzer is connected to a PC or a DC adapter with USB socket, it takes power from these sources
Interface	220x220 TFT color display 2x3 keys on the water-proof keypad Menus and help screens in English (standard), Japanese Bluetooth: v. 4.2 BLE Single-mode Class B USB type C connection to a personal computer
Dimensions	40 x 185 x 33 mm (1.6 x 7.3 x 1.3 inch)
Operating temperature	-20°- 55°C (-4°-131°F)
Weight	185 g (6.5 oz) with the battery

NOTE:

All specifications could be changed without notice.

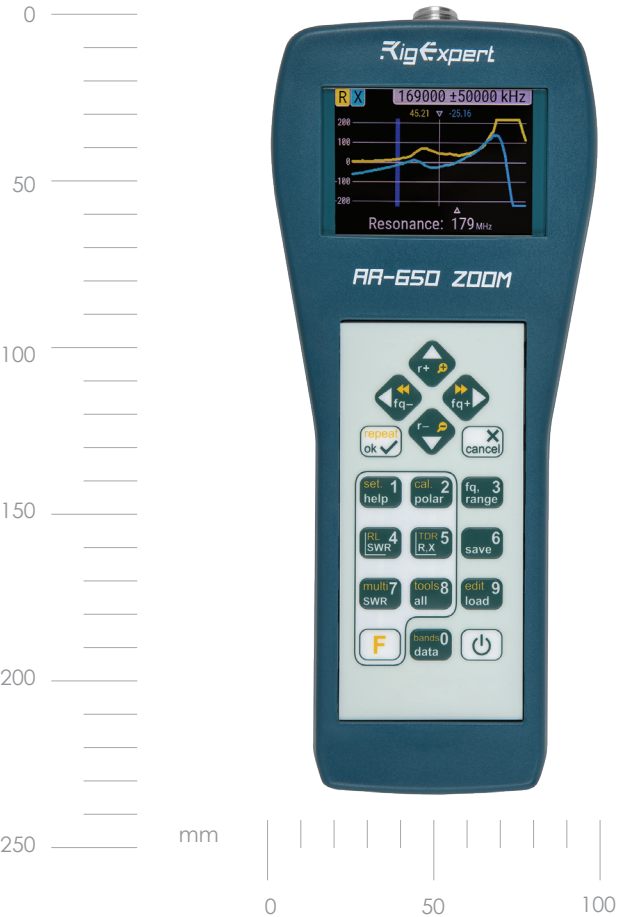
RigExpert AA-650 ZOOM

Wide range and PRO-level functionality

Factory calibrated analyzer is designed for checking and tuning UHF systems up to 650 MHz.

Expand measurement boundaries and functionality with PRO-level tool.

Explore every graph detail on a large screen with ZOOM function.



RigExpert AA-650 ZOOM

Frequency range	0.1 to 650 MHz
Frequency entry	1 kHz
Measurement for	12.5, 25, 28, 37, 50, 75, 100, 150, 200, 300, 450, 600 Ohm systems
SWR measurement range	1 to 100 in numerical modes, 1 to 10 in chart modes
R and X range	0...10 000, -10 000...10 000 in numerical modes, 0.. 1 000, -1 000... 1 000 in chart modes
Display modes	SWR at single or multiple frequencies SWR, return loss, R, X, Z , L, Cat single frequency SWR chart, 20 to 500 points R, X chart, 20 to 500 points Smith chart, 20 to 500 points Return loss chart, 20 to 500 points TDR (Time Domain Reflectometer) chart Cable tools (loss and characteristic impedance) Optional open-short-load calibration. Multe mode - to check your multiband antenna promptly
RF output	Connector type: N Output signal shape: square Output power: -10 dBm (at 50 Ohm load)
Power	Three 1.5V alkaline batteries, type AA, or Three 1.2V Ni-MH batteries, type AAMax. 3 hours of continuous measurement, max. 2 days in standby mode when fully charged batteries are used When the analyzer is connected to a PC or a DC adapter with a USB socket, it takes power from these sources
Interface	320x240 TFT color display 6x3 keys on the water-proof keypad Menus and help screens in English (standard), Japanese, Ukrainian, Polish, Spanish and German Bluetooth: v. 4.2 BLE Single-mode Class B USB type C connection to a personal computer
Dimensions	230 x 100 x 55 mm (9 x 4 x 2 inch)
Operating temperature	0...40 °C (32...104 °F)
Weight	450 g (15.9 oz)

NOTE:

All specifications could be changed without notice.

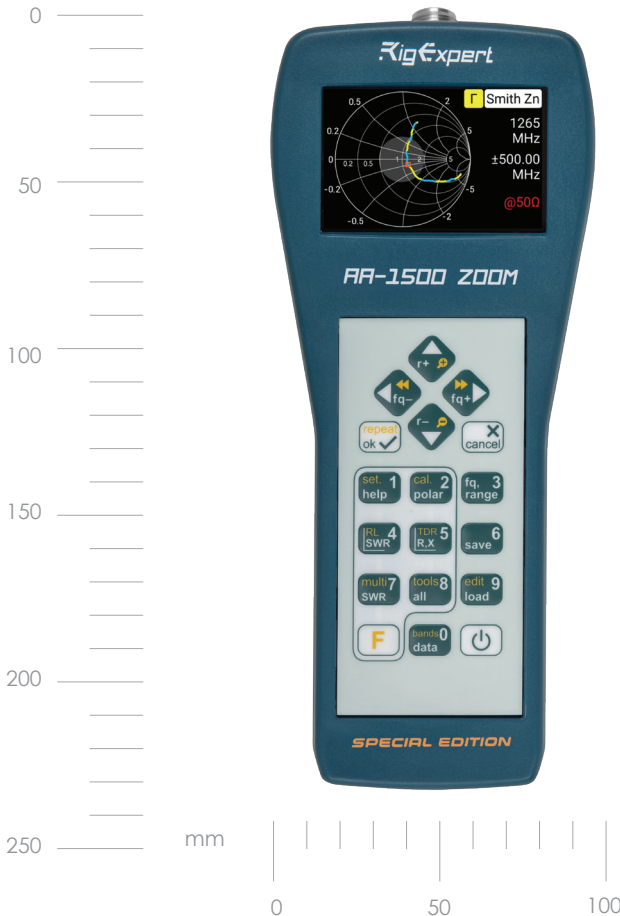
RigExpert AA-1500 ZOOM

An updated and even more powerful

Factory calibrated analyzer is designed for checking and tuning UHF systems up to 1500 MHz.

Expand measurement boundaries and functionality with PRO-level tool.

Explore every graph detail on a large screen with ZOOM function even in direct sunlight.



RigExpert AA-1500 ZOOM

Frequency range	0.1 to 1500 MHz
Frequency entry	1 kHz
Measurement for	12.5, 25, 28, 37, 50, 75, 100, 150, 200, 300, 450, 600 Ohm systems
SWR measurement range	1 to 100 in numerical modes, 1 to 10 in chart modes
R and X range	0...10 000, -10 000...10 000 in numerical modes, 0.. 1 000, -1 000... 1 000 in chart modes
Display modes	SWR at single or multiple frequencies SWR, return loss, R, X, Z , L, Cat single frequency SWR chart, 20 to 500 points R, X chart, 20 to 500 points Smith chart, 20 to 500 points Return loss chart, 20 to 500 points TDR (Time Domain Reflectometer) chart Cable tools (loss and characteristic impedance) Optional open-short-load calibration. Multe mode - to check your multiband antenna promptly
RF output	Connector type: N Output signal shape: square Output power: -10 dBm (at 50 Ohm load)
Power	Three 1.5V alkaline batteries, type AA Three 1.2V Ni-MH batteries, type AA Three 3.7V LiPo batteries, 14200 Max. 4 hours of continuous measurement, max. 2 days in standby mode when fully charged batteries are used. When the analyzer is connected to a PC or a DC adapter with a USB socket, it takes power from these sources
Interface	USB connection to personal computer 800×480 color Blanview® display 6×3 keys on the water-proof keypad Menus and help screens in English (standard), French, Italian, Japanese, Ukrainian, Portuguese, Spanish and German Bluetooth v. 4.2 (Single-mode, Class B)
Dimensions	100 × 230 × 55 mm, (4 × 9 × 2 inch)
Operating temperature	0...40 °C (32...104 °F)
Weight	442g (15.6 oz)

NOTE:

All specifications could be changed without notice.

RigExpert AA-2000 ZOOM

TURN complex analysis into FUN!

Factory calibrated analyzer is designed for checking and tuning UHF systems up to 2000 MHz.

Expand measurement boundaries and functionality with PRO-level tool.

Explore every graph detail on a large screen with ZOOM function even in direct sunlight.



RigExpert AA-2000 ZOOM

Frequency range	0.1 to 2000 MHz
Frequency entry	1 kHz
Measurement for	12.5, 25, 28, 37, 50, 75, 100, 150, 200, 300, 450, 600 Ohm systems
SWR measurement range	1 to 100 in numerical modes, 1 to 10 in chart modes
R and X range	0...10 000, -10 000...10 000 in numerical modes, 0.. 1 000, -1 000... 1 000 in chart modes
Display modes	SWR at single or multiple frequencies SWR, return loss, R, X, Z , L, Cat single frequency SWR chart, 20 to 500 points R, X chart, 20 to 500 points Smith chart, 20 to 500 points Return loss chart, 20 to 500 points TDR (Time Domain Reflectometer) chart Cable tools (loss and characteristic impedance) Optional open-short-load calibration. Multe mode - to check your multiband antenna promptly
RF output	Connector type: N Output signal shape: square Output power: -10 dBm (at 50 Ohm load)
Power	Three 1.5V alkaline batteries, type AA Three 1.2V Ni-MH batteries, type AA Three 3.7V LiPo batteries, 14200 Max. 4 hours of continuous measurement, max.2 days in standby mode when fully charged batteries are used When the analyzer is connected to a PC or a DC adapter with a USB socket, it takes power from these sources
Interface	USB connection to personal computer 800×480 color Blanview® display 6×3 keys on the water-proof keypad Menus and help screens in English (standard), French, Italian, Japanese, Ukrainian, Portuguese, Spanish and German Bluetooth v. 4.2 (Single-mode, Class B)
Dimensions	100 × 230 × 55 mm, (4 × 9 × 2 inch)
Operating temperature	0...40 °C (32...104 °F)
Weight	450 g (15.9 oz)

NOTE:

All specifications could be changed without notice.

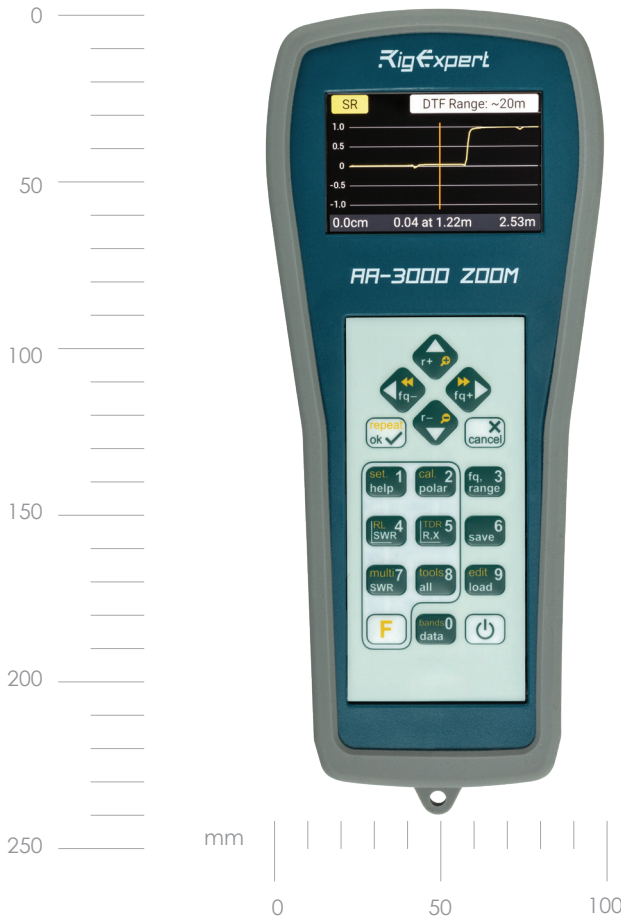
RigExpert AA-3000 ZOOM

Go beyond the Earth

Factory calibrated analyzer is designed for checking and tuning UHF systems up to 3 GHz!

Expand measurement boundaries and functionality with PRO-level tool.

Explore every graph detail on a large screen with ZOOM function even in direct sunlight.



RigExpert AA-3000 ZOOM

Frequency range	0.1 to 3000 MHz
Frequency entry	1 kHz
Measurement for	12.5, 25, 28, 37, 50, 75, 100, 150, 200, 300, 450, 600 Ohm systems
SWR measurement range	1 to 100 in numerical modes, 1 to 10 in chart modes
R and X range	0...10 000, -10 000...10 000 in numerical modes, 0.. 1 000, -1 000... 1 000 in chart modes
Display modes	SWR at single or multiple frequencies SWR, return loss, R, X, Z , L, Cat single frequency SWR chart, 20 to 500 points R, X chart, 20 to 500 points Smith chart, 20 to 500 points Return loss chart, 20 to 500 points TDR (Time Domain Reflectometer) chart Cable tools (loss and characteristic impedance) Optional open-short-load calibration. Multe mode - to check your multiband antenna promptly
RF output	Connector type: N Output signal shape: square Output power: -10 dBm (at 50 Ohm load)
Power	Three 1.5V alkaline batteries, type AA Three 1.2V Ni-MH batteries, type AA Three 3.7V LiPo batteries, 14200 Max. 4 hours of continuous measurement, max. 2 days in standby mode when fully charged batteries are used. When the analyzer is connected to a PC or a DC adapter with a USB socket, it takes power from these sources
Interface	USB connection to personal computer 400x800 color BlanView display 6x3 keys on the water-proof keypad Menus and help screens in English (standard), French, Italian, Japanese, Ukrainian, Portuguese, Spanish and German Bluetooth v. 4.2 (Single-mode, Class B)
Dimensions	100 × 230 × 55 mm, (4 × 9 × 2 inch)
Operating temperature	0...40 °C (32...104 °F)
Weight	650g (23 oz) with battery

NOTE:

All specifications could be changed without notice.

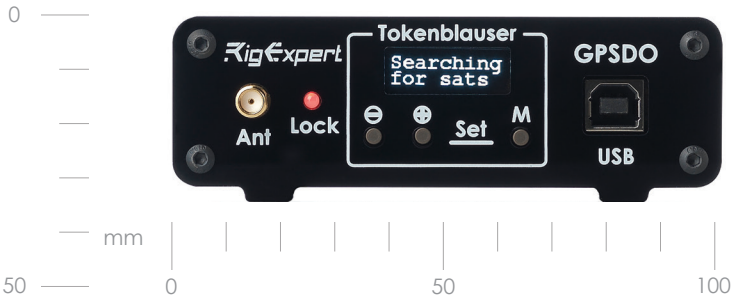
RigExpert Tokenblauser GPSDO

When you demand More

A highly accurate and stable GNSS-disciplined generator is designed for calibrating RF devices.

Experiment with an Arduino-compatible GPSDO with open-source code.

Use the Tokeblauser GPSDO with four independent outputs to simultaneously adjust multiple devices.



PLL synthesized outputs	4
Output frequency range	0,16 to 200/350/710 MHz (depending on PLL type)
Frequency setting	With 1Hz steps (or excellent tuning with 1 ppt steps)
Auxiliary output	10 MHz
Frequency stability	0,001 ppm or better
Signal levels	3.3V CMOS logic
Output connector	BNC
GNSS antenna type	External, active, 3.3V
GNSS	GPS, Galileo
Dimensions	100 mm x 100 mm x 25 mm (PCB) 105 mm x 105 mm x 35 mm (cabinet)

NOTE:

All specifications could be changed without notice.

RigExpert REAMP

Oversee for stability

The logger is designed for measuring, recording, and analyzing the power consumption of low-power electronics.

Use REAMP in your ULP projects to achieve faster and better results.



Number of measuring channels	3
Measuring range	Current - from 10 μ A to 1A (1 channel) Voltage - from 0V to 5V (2 channels)
Sample rate	10 Hz...10 kHz (10 kHz one channel only)
Measuring results displaying	Instant values graph Average values in digits format Saving data to a log Easy navigation using horizontal and vertical zooming
Power supply	USB port of PC Additional built-in Li-ion battery for using when current consumption is over 500 mA
Interface	USB connection to PC (USB 2.0, USB 3.0) Operation system Windows 7, Windows 8, Windows 10, macOS, Linux (Ubuntu) Support for 3 languages (EN, UA, RU) Application software «RigExpert AMP Logger»
Dimensions	67 x 57 x 27 mm

NOTE:

All specifications could be changed without notice.

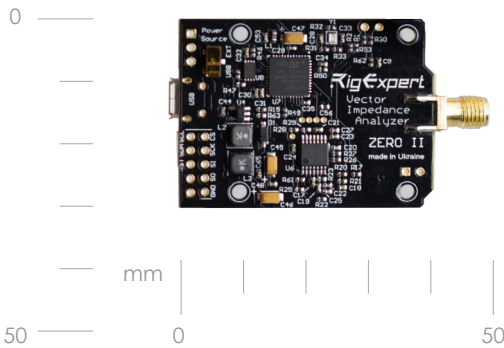
RigExpert Zero II

Today's mighty oak was yesterday's acorn

Factory calibrated analyzer is designed for embedded applications.

Use it in antenna tuners, transceivers, or power amplifiers as the core of the load-matching scheme.

Quickly diagnose and tune UHF systems up to 1 GHz.



Frequency range	0.1 to 1000 MHz
Frequency setting time	20 ms
Return values	Resistance Reactance (signed) SWR Return Loss
Output connector	SMA
Output connector	-10 dBm
Power	USB or 3 to 48V through the Power pot
Operating temperature	0...40 °C (32...104 °F)
Interfaces	USB, I2C, SPI, UART
Dimensions	30 x 40 x 4 mm (1 x 2 x 0,2 inch)
Weight	30 g (3 ozī)

NOTE:

All specifications could be changed without notice.

Connect your transceiver to the PC:

All-in-one through a single USB port

RigExpert transceiver interfaces (TI) have many sustainable competitive advantages:

- Two separate audio channels with separate audio levels controls
- CAT system support
- CW manipulation output
- RTTY & FSK modes are supported
- Compatible with any HAM radio logging software

Each set includes a cable for your transceiver.
The cable is produced by Rig Expert.
The full list of cables you can find on our site.



RigExpert TI-5000

All-in-one through a single USB port!

The transceiver USB interface is based on a high-quality audio codec IC to operate phone, CW, and digital modes using a personal computer.



RigExpert TI-5000

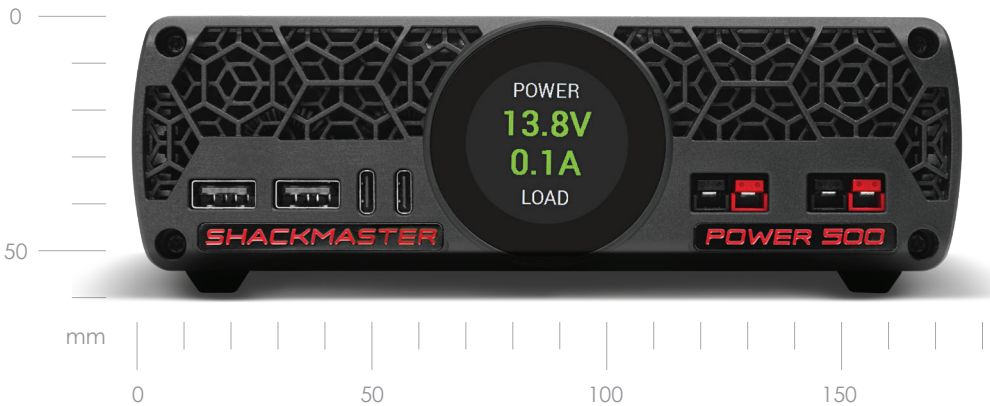
General features	Transceiver audio interface for operating digital modes CW keyer (WinKey) PTT and CW outputs CAT (Computer Aided Transceiver) system
Computer connection	USB connector (consuming 100 mA max.) No external power supply needed
Transceiver connection	Single 25-pin connector for transceiver cable Various transceiver models supported
Audio interface	True 16-bit DAC/ADC used Insulated from digital nets Maximum input/output amplitude is 1 V Input/output samplerate: 8 to 48 kHz True 16-bit DAC/ADC used Volume levels are adjusted by the front panel potentiometers
CAT serial port	Electrical compatibility: RS-232, CI-V, TTL or inverted-TTL (Yeasu, Icom, Kenwood, Ten-Tec, Elecraft and JRC transceivers) Baudrate: 300-115200 baud
PTT/CW outputs	PTT output: open collector and TTL-level CW output: open collector Maximum current is 50 mA
FSK	Open collector output. Speed: 45-1200 baud
System requirements	MacOS/Linux/Windows 2000/XP/2003/Vista/7/8/10 (32- or 64-bit) operating system For Windows 10/MacOS/Linux drivers aren't needed Desktop or laptop computer with USB 2/3 compliant port
Supported software	MixW 2/3/4, MMTTY, MMSSTV, WSJT, WSJT-X, WSPR and other HAM radio software
Dimensions	200 x 100 x 40mm
Weight	300 g
Operating temperature	0...40 °C (32...104 °F)

NOTE:

All specifications could be changed without notice.

Shackmaster power 500

Compact desktop
Power supply
36A|13.8V



Beyond the ordinary standards!

An innovative power supply unit will satisfy the most demanding needs.

- Compact design and adjustable installation: improve the aesthetics and functionality of the workspace by placing the device vertically or horizontally
- Low acoustic noise: step into the realm of peace, focusing on tasks undisturbed
- Multi-function sensor display: Feel the power in your hands, providing real-time monitoring of voltage, current, and power consumption with one touch
- Operating temperature from - 30° to 70°C
- Intelligent protection system: devices are protected from overcurrent, overvoltage, and overheating - work with confidence knowing that your valuable equipment is well protected
- Designed and manufactured by RigExpert

Rated power	500 W
Rated current	36A
Output voltage	13,8 V
Input AC voltage	80V to 264V
Input AC frequencies	47 Hz до 63 Hz
Operating temperature range	-30°C to +70°C -22°F to 158°F
Acoustic noise	~21 dB
Over-voltage protection	Yes
Over-current protection	Yes
Short circuit protection	Yes

AC current (maximum)	5,8 A at 110 V 2,9 A at 230 V
EMC emission	Class I: Class B, Class II: Class A
EMI ripple	200mVp-p
Storage temperature range	від -40°C to +85°C від -40°F to +185°F
Energy Conversion Efficiency (ECE)	> 90% (heat output at maximum load < 60 W)
Dimensions	172 mm x 55 mm x 185 mm
Weight	1,1 kg

NOTE:

All specifications could be changed without notice.

Shackmaster OSL kit

OSL (Open-Short-Load)
Calibration Set



Tune in for easy calibration!

The kit is designed to calibrate your equipment in the DC to 2.5 GHz frequency range. Carry it in your pocket, work in the field and control it freely thanks to the swivel design.

Number of connectors	3
Connector type	N male 50 Ohm
Frequency range	DC(direct current) to 2,5 GHz
Power	250 mVt
Return Loss	-22 dB @ 3 GHz -31 dB @ DC to 1,5GHz
Resistance DC	50 Ohm
Operating temperature range	-15°C to +55°C
Storage temperature range	-40°C to +85°C
Weight	110 g
Dimensions	49 x 84.6 x 25 mm

NOTE:

All specifications could be changed without notice.



Silicon USB Type A - Type C cable

Frost-resistant and highly flexible

This cable is designed for fast charging of devices with Type C.

Maintains its integrity and functionality even under extreme bending and prolonged temperature up to -15°.

Available colors: Military green and Blue



Silicon case

Protect your analyzer

The silicone cover is intended for additional protection of AA-650 ZOOM, AA-1500 ZOOM, AA-2000 ZOOM analyzers from dust, moisture and adverse weather conditions.

Comes complete with AA-3000 ZOOM.

Note: Please note that the case does not cover the front panel of the analyzer.



CW Trinket

Telegraph at hand

Do you like the sound of Morse code signals?

But you can't be near the transceiver all the time?

We have a solution! The key fob simulates telegraph radio communication on the air. What's next? We suggest you find out for yourself and enjoy the pleasure!



Lanyard for the Stick analyzer

Free your hands for radio communication

The lanyard is intended for carrying the analyzer around the neck.

Suitable for mounting any antenna analyzer from the Stick line.



Holster for the Stick analyzer

Cover YOUR Stick!

The holster is designed to carry and protect the Stick analyzer.

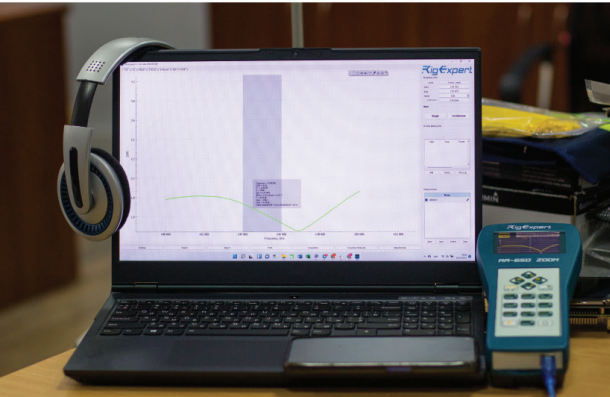
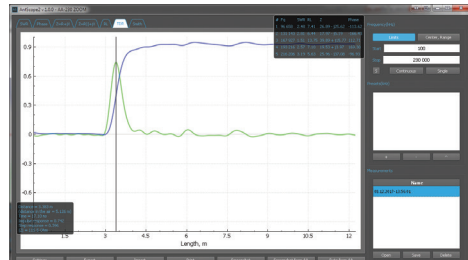
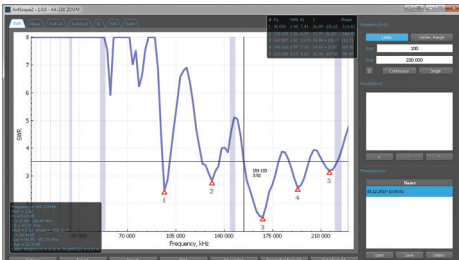
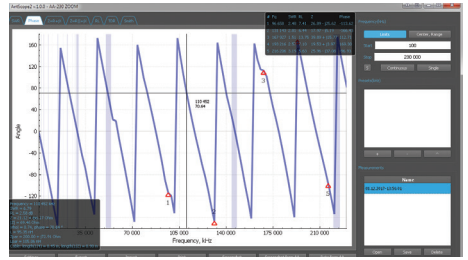
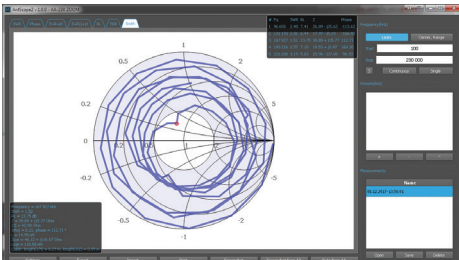
Use it for field work and free your hands for more productivity.



- Reliability is embedded in the DNA of RigExpert devices.
- Every RigExpert device goes through four phases of quality control before entering the sales representative warehouse.
- Therefore, we are confident in the quality of our products and offer a two-year replacement of the device instead of repair.
- We don't take any risks and you only win.

AntScope 2

The free AntScope2 software is designed to support various models of RigExpert antenna analyzers on your Windows or Mac computer.





MixW4

Three-in-one radio amateur software: Logger, Digital, Contests

Multi-mode multi-platform software for radio amateurs. Numerous new features including FT8, FT4, KiwiSDR modes, and external RX support.

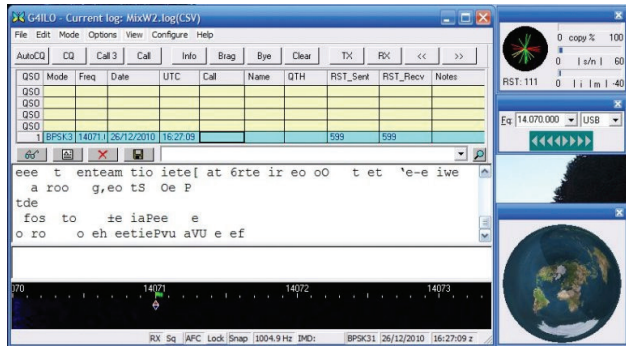
Important features of MixW4:

- Three-in-one (Logger, Digital, Contests)
- KiwiSDR support
- Digital mods including FT8 and FT4 with proprietary digital signal processing algorithms
- Unique CW software algorithm with fine-tuning for solid (FB) signal
- User manual in English, Dutch, and German languages
- Convenient interface with the ability to multi-window, customize fonts, and display
- A wide range of macros allowing for faster communication
- Contest mode with support for modules with extended statistics - you can write contest modules yourself
- User-Defined Contest - take part in any contest
- Simple scripting programming language to write additional modules and statistics by yourself
- Technical support by e-mail (response time no more than 24 hours considering WorldWide service)



MixW3

The Legendary Software for radio amateurs
Three in One: Logger, Digital, Contests
You can download and purchase it from
<http://mixw.net/>





Software for REAMP and Power 500

Full control and stabilization

This free software is designed to fully control the current consumption of devices connected to your REAMP or Power 500.

Download the software to your laptop or desktop computer and choose the method and mode of data acquisition.

Move and scale the data on the screen for the most convenient display.

Extend the service life of your devices as much as possible and stabilize the systems.



North America

www.rigexpert.net
716-240-2597

www.gigaparts.com
866-535-4442

www.ChatRadio.com
423-867-2290

www.gpscentral.ca
800-585-9331

www.dxengineering.com
1-800-777-0703

www.randl.com
800-221-77-35

www.radioworld.ca
416-667-1000

www.hamradio.com
714-533-7373

www.scharfindustries.com
888-964-8388

www.henryradio.com
310-463-1859

www.cricketventures.com

Europe

www.k-po.com
386-423-16129

www.moonrakeronline.com
4419-0828-1705

www.astroradio.com
9373-534-56

www.mobimax.bg
3598-9993-0303

www.inradio.pl
4842-6492-828

www.limmared.nu
4603-2566-0660

www.zenithantennes.fr
3367-9419-680

www.matra-systems.ro
0214-561-074

www.bmtel.it
3903-1431-0299

www.radiotronics.ie
0169-944-62

www.sardif.com
3313-986-3967

www.wimo.com
490-7276-96-680

www.willtron.at
4322-5225-280-420

www.novatel.com.fr
9021-2438-0286

www.dmtonline.dk
4598-461-333

www.konektor5000.pl
4842-671-9807

cristi@mo.ro
4074-5094-194

www.dazz.ro
4023-2226-226

www.mhzoutdoor.com
3905-4116-46839

www.hspsshop.it
3908-7156-0100

www.radiosystems.hu
3613-653-496

www.hamradioshop.it
0776-520-129

www.pcs-electronics.com
3864-231-6129

www.mtftelecomunicaciones.com
922 354 463

www.atlas-communications.ch
4191- 683- 0140

www.rxtx-tuote.fi
0453-4041-35

www.ercomer.pl
4822-270-1215

www.ddamtek.cz
4207-7711-4070

www.paolettiradiocomunicazioni.it
3905-5319-367

www.radiofrequenzashop.com
0324-9720-784

France
3304-6722-5550
3304-6722-5615

www.simarud.no
www.permo.no
4764-9180-80

RigExpert

**SHACK
MASTER**

Asia and Middle Asia

www.tenmetershop.com
6626-239-024

asin.redtea@msa.hinet.net
8863-364-6700

www.yaesu.ph
www.eibradio.com
6391-7852-0474

www.cbstar.kz
7727-3006-530

www.wxidianjin.com
1801-8345-013

www.hnt.jp
8105-5260-7655

www.measuretronix.com,
6625-141-000

www.wavenix.com

Middle East and North Africa

laveei@gmail.com
9724-8331-306

compasshouse@yahoo.com
9665-5555-1600

info@alfatelecom.com.qa
9744-4324-446/7

South America

www.duochile.cl
5622-8405-278

www.radiohaus.com.br
5519-3894-2677

www.ham-radio-brothers.negocio.site
1998-323-5341

Oceania

www.rfsolutions.com.au
6173-264-6443

info@electrotest.co.nz
6494-482-600



Rig Expert Ukraine Ltd.

Solom'yans'ka Square, 2, office 405, Kyiv, 03035

Ukraine, tel: +380 44 353 92 42

e-mail: office@rigexpert.com

web: www.rigexpert.com

facebook: [@RigExpertUkraineLtd](https://www.facebook.com/RigExpertUkraineLtd)

instagram: [@rig_expert_ukraine_ltd](https://www.instagram.com/rig_expert_ukraine_ltd)

Made in Ukraine

